

Data-Driven Group and Crowd Behavior



Jehee Lee
Seoul National University

What determines how people move?

Physics

Mass, inertia, force

Physiology

Muscle, skeleton, tendon

Culture and Psychology

Style, mood



Group behavior is a complex system

Complex interaction of
Individual behavior

Subtle changes of individual
behavior may result in
completely different group
behavior



Principles and Observation

**Do we need principles that determine
group/crowd behavior?**

Rule-based agent model
social force model
potential fields

**Do we simply imitate what we have seen
before?**

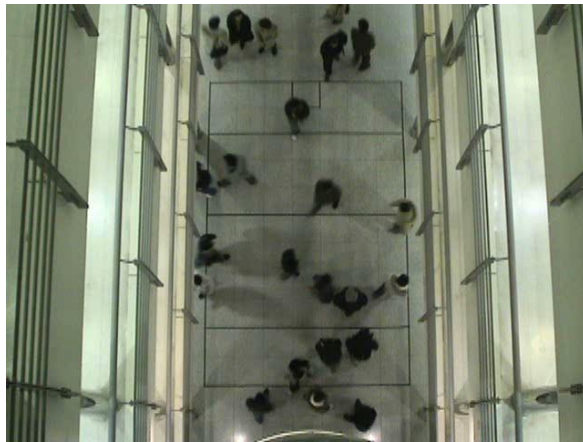
Data-driven crowd simulation

Capturing Crowd Data

Record videos from a bird's-eye view

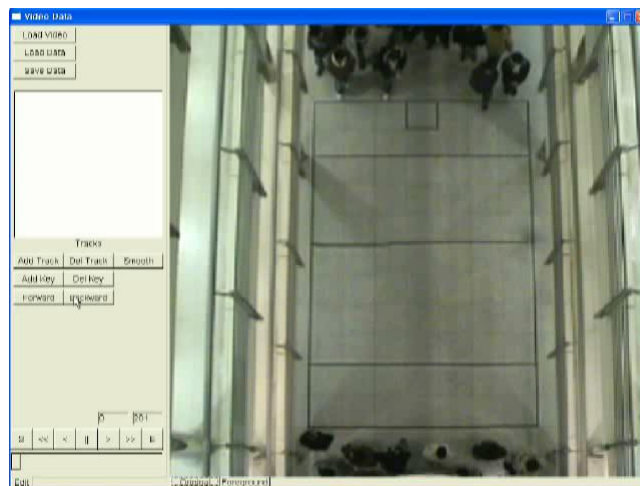


Setup



Recorded video

Tracking pedestrians in video



Making Use of Observed Data

Record-and-playback is not enough

Create something new from canned data

Toolbox for animators/programmers

edit, manipulate, segment, splice, blend, texture, adapt



Visual Characteristics of Crowds

Each crowd exhibit particular “style”

Spatial Formation

Density, Regularity, Persistency

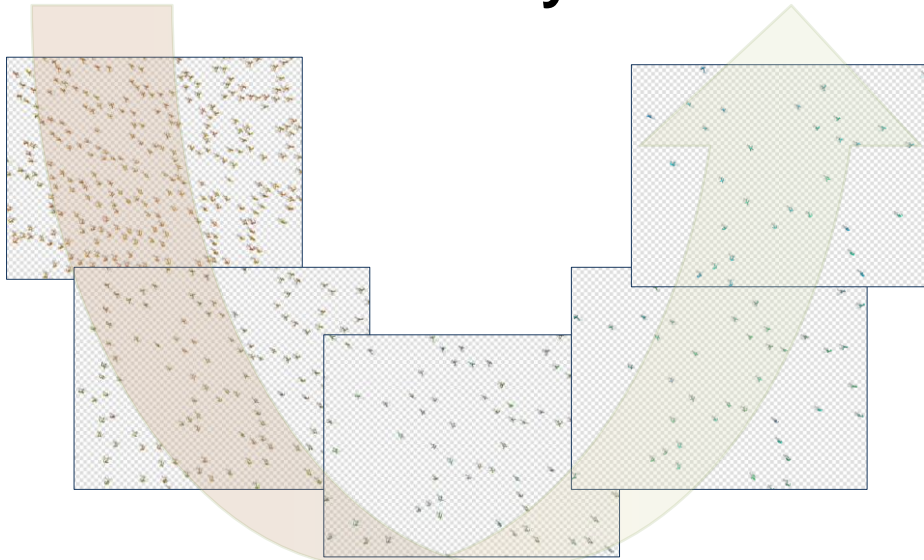
Characteristics of Individuals

Distribution of velocities

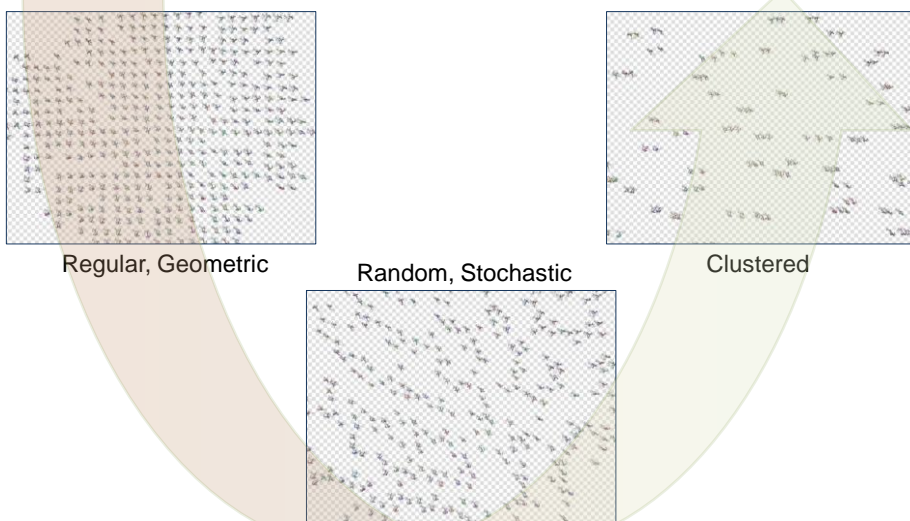
Style of locomotion

Reaction to potential collision

Density



Regularity, Randomness, Clustering

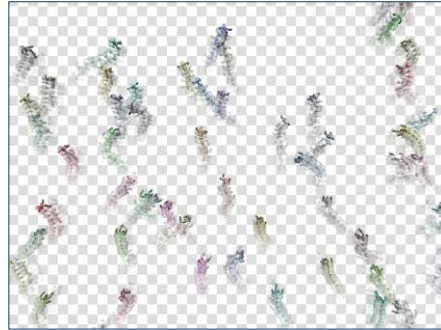


Temporal Persistency

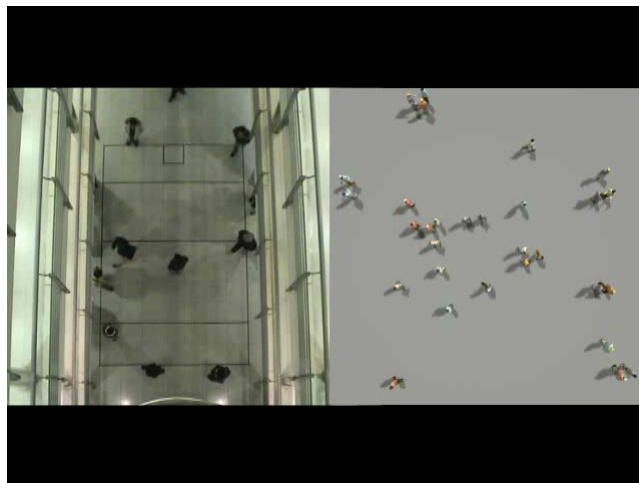
Persistent



Transient



Texturing

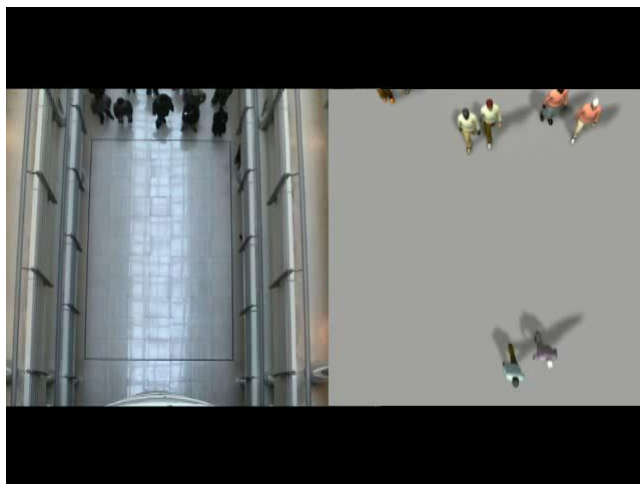


Group Behavior from Video: A Data-Driven Approach to Crowd Simulation,
Kang Hoon Lee, Myung Geol Choi, Qyoun Hong, Jehee Lee, SCA 2007

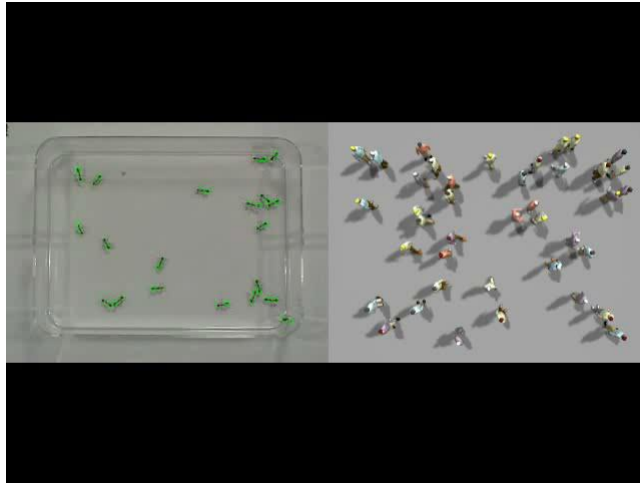
Lining Up



Cluttered Formation

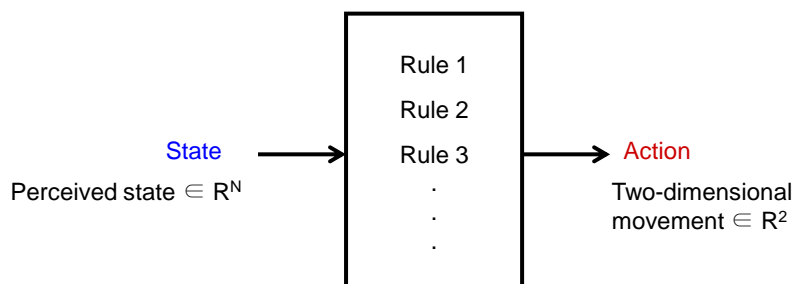


Group Behavior of Ants



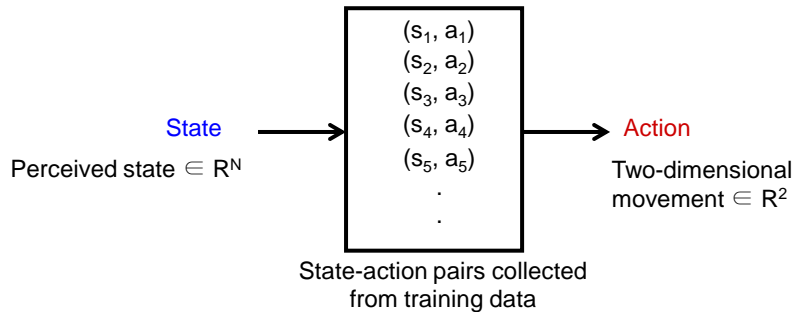
Rule-Based Agent Model

Each agent perceives its **state** and decides the next **action** based on a set of **rules**

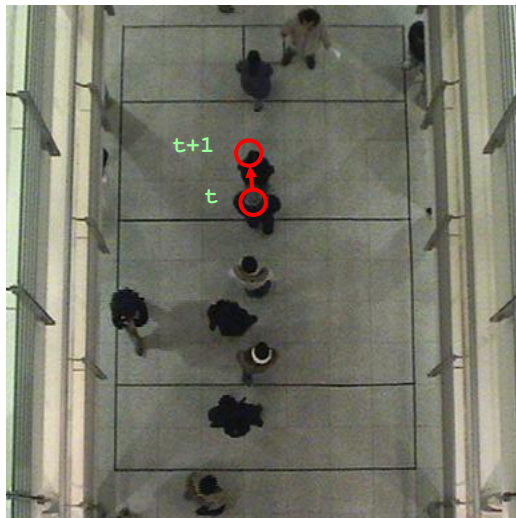


Data-Driven Agent Model

Each agent perceives its **state** and decides the next **action** based on a set of **examples**



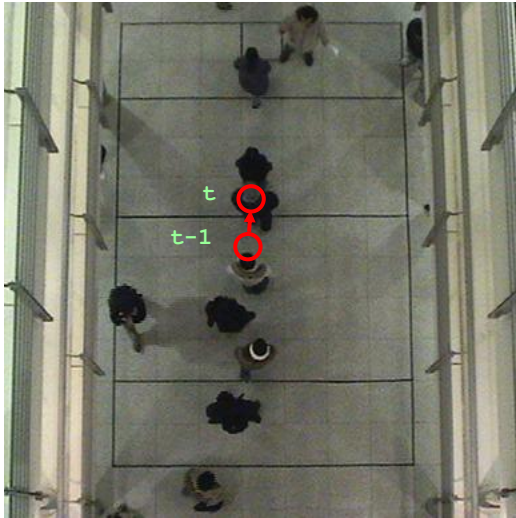
State-Action Trajectories



Action 
Two-dimensional vector

State
N-dimensional vector
from a set of features

State-Action Trajectories

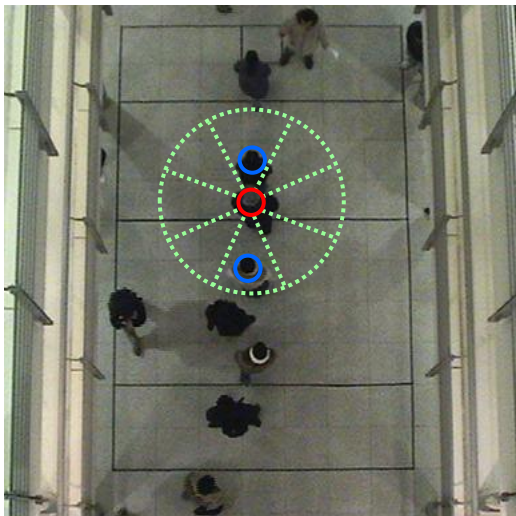


Action 
Two-dimensional vector

State
N-dimensional vector
from a set of features

Speed 

State-Action Trajectories



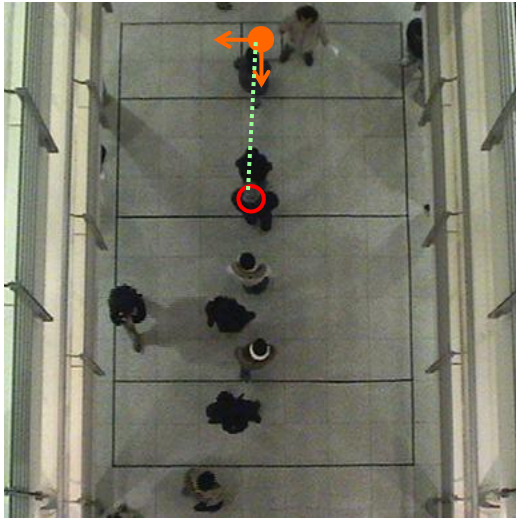
Action 
Two-dimensional vector

State
N-dimensional vector
from a set of features

Speed 

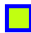
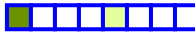
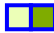
Neighbor 

State-Action Trajectories

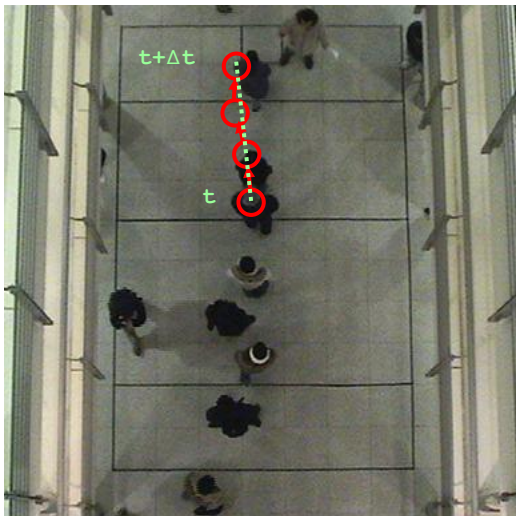


Action 
Two-dimensional vector

State
N-dimensional vector
from a set of features

- Speed 
- Neighbor 
- Pivot 

State-Action Trajectories

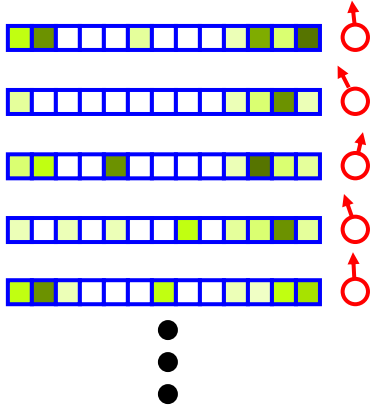
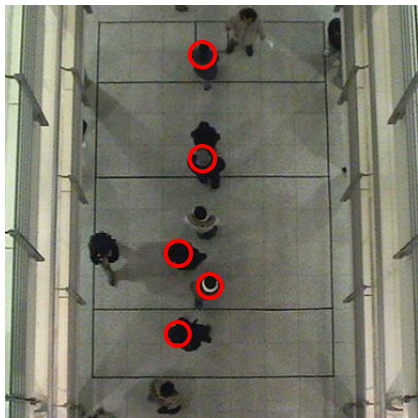


Action 
Two-dimensional vector

State
21-dimensional vector
from 4 features

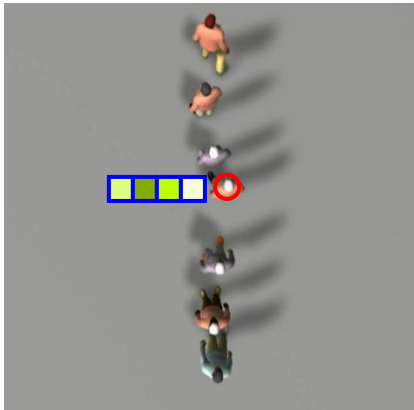
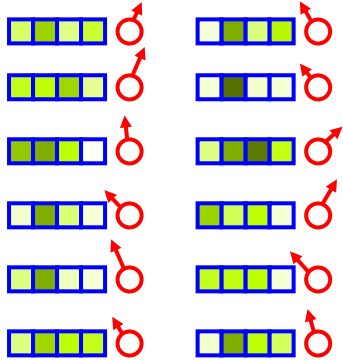
- Speed 
 - Neighbor 
 - Pivot 
 - Intended direction 
- 

Collecting State-Action Pairs



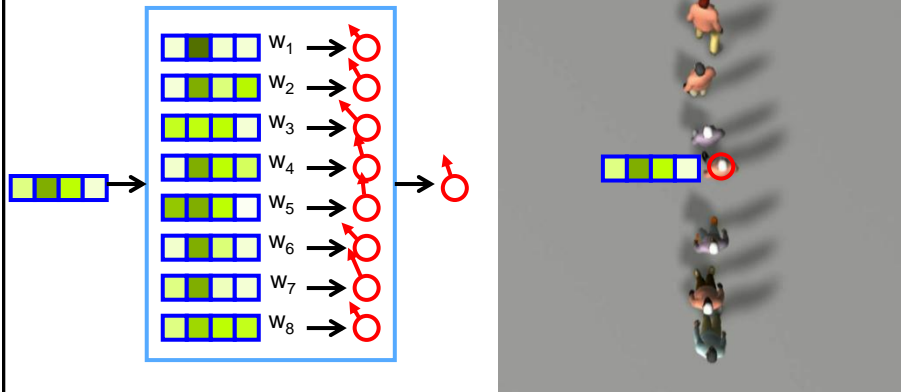
Data-Driven Simulation

Given the state of each agent,
search similar states from data



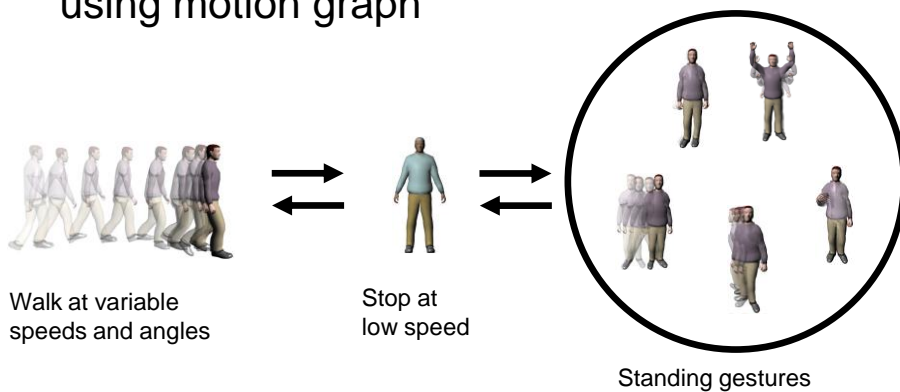
Data-Driven Simulation

Locally weighted linear regression

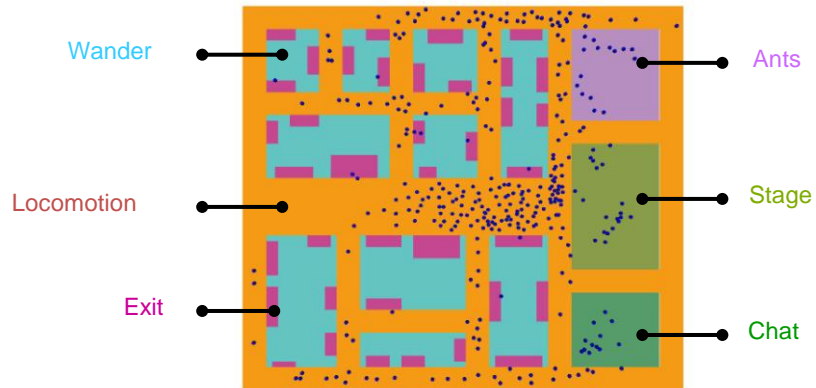


Motion Synthesis

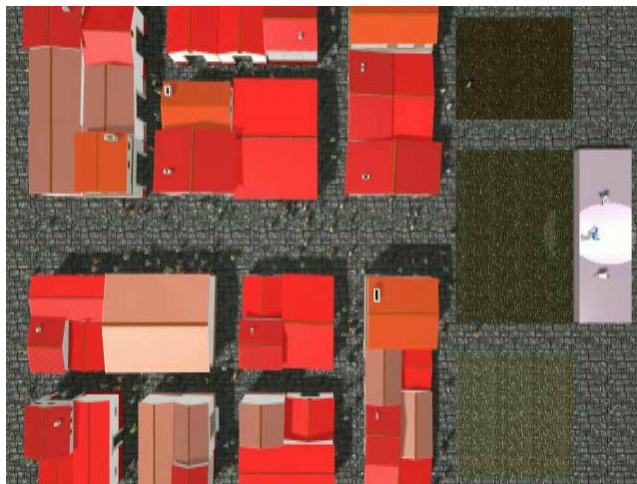
Full-body motion from 2D trajectory
using motion graph



Composition of Clips



Composition of Clips



Group Motion Editing

Direct manipulation of motion clips

Warp, Splice, Adapt, Copy-and-Paste, Group/Ungroup

Preserve the original quality as much as possible

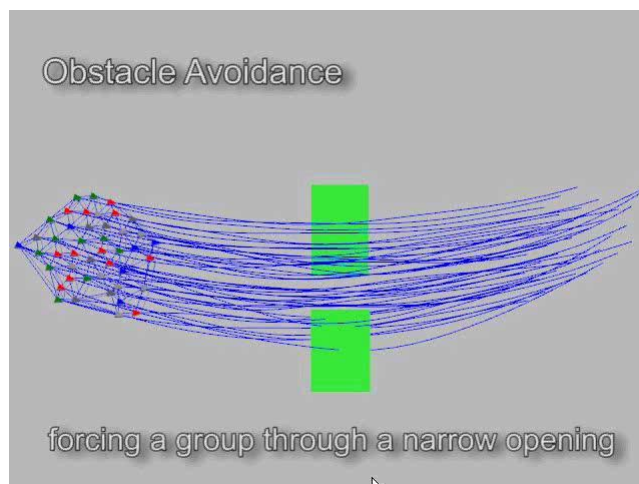
Individual trajectories

Formation

Modeling group motion clips as 3D meshes

Group Motion Editing, Taesoo Kwon, Kang Hoon Lee,
Jehee Lee, Shigeo Takahashi, Siggraph 2008

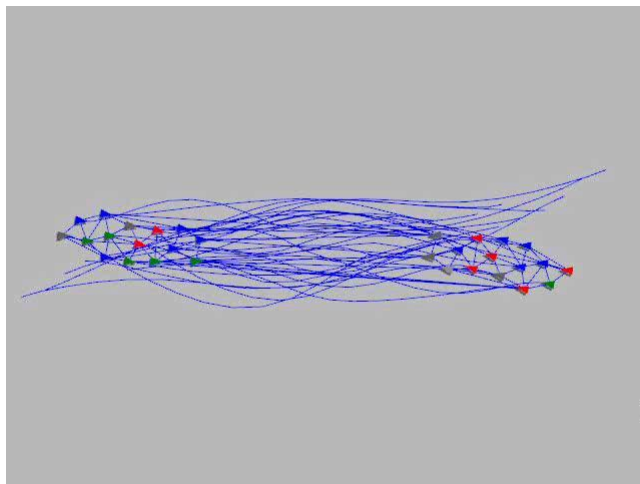
Direct Manipulation



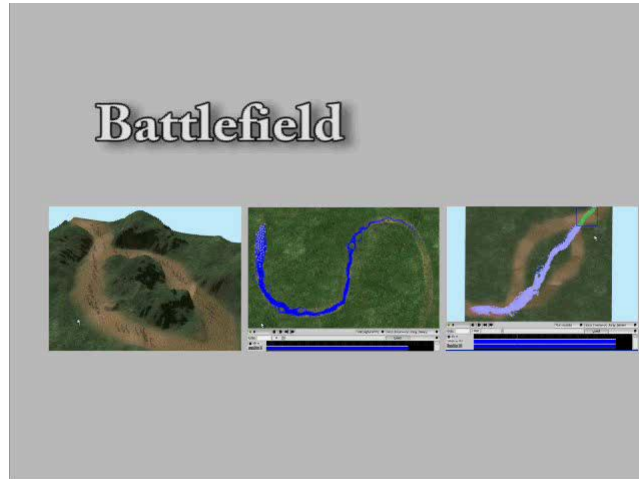
Splice



Inhomogeneous Groups



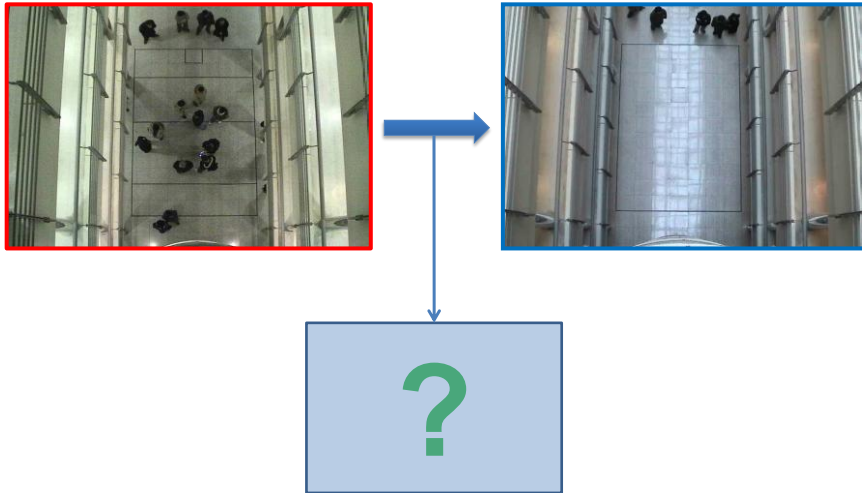
Scissoring



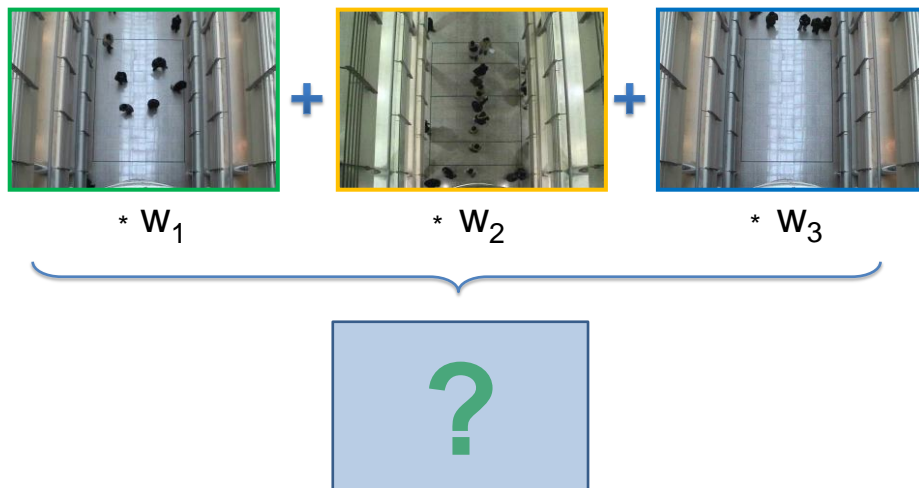
Copy and Paste



Style Transition



Interpolating Styles



Why is it Challenging?

Unstructured formation

Random, regular, clustered
Persistent vs time-varying

Crowds are time-series data

Eg) Aggressive pedestrians try to pass each other

Arbitrary number of agents

No one-to-one correspondence

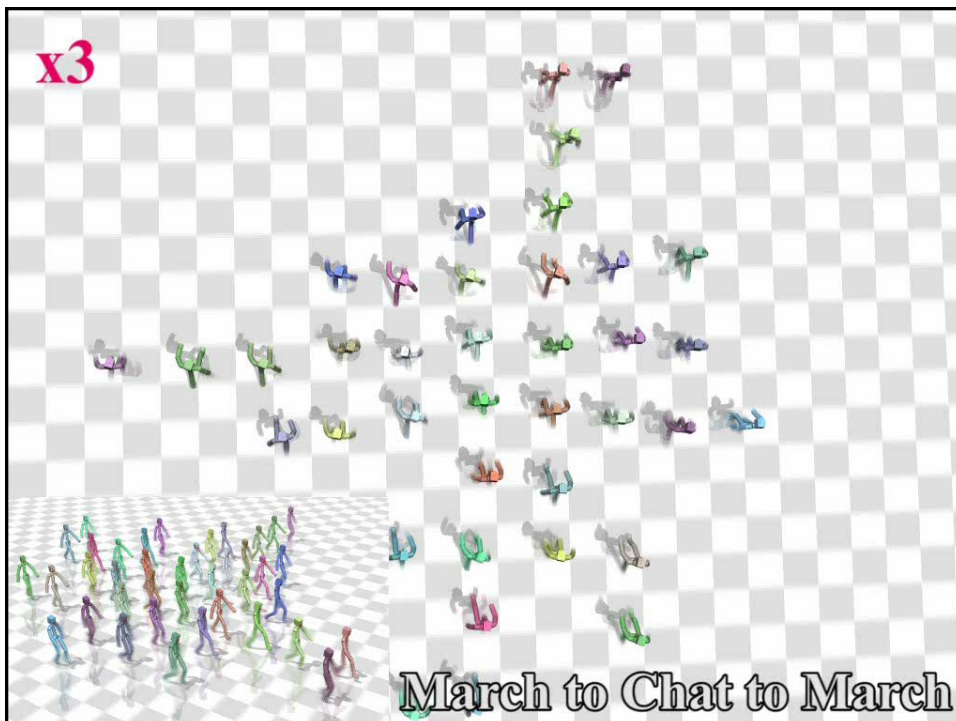
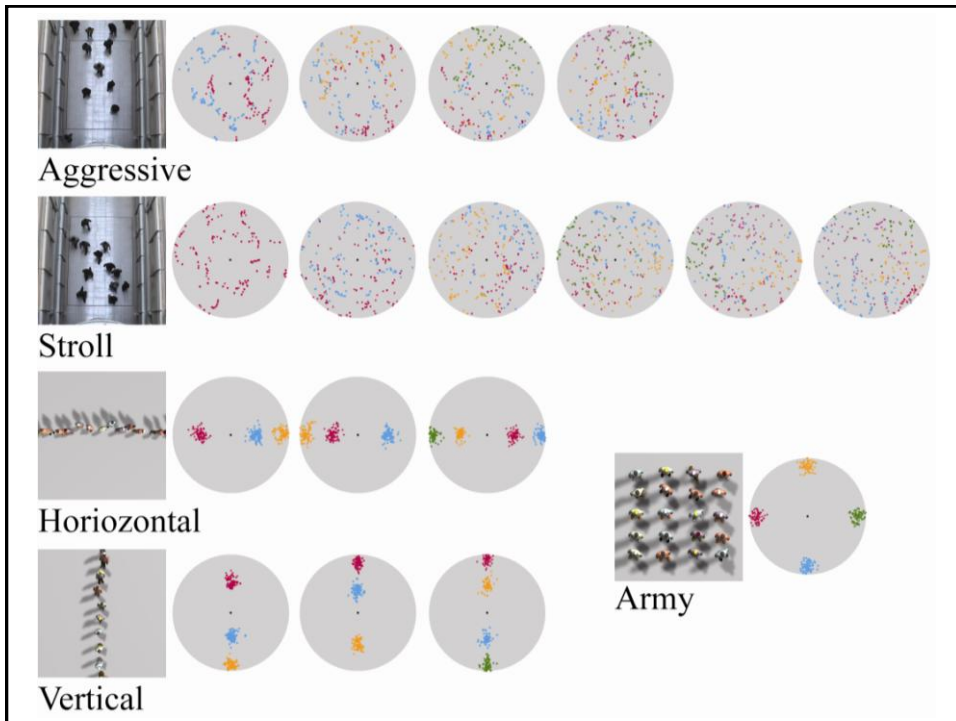
Morphable Crowds

Interpolate models instead of data

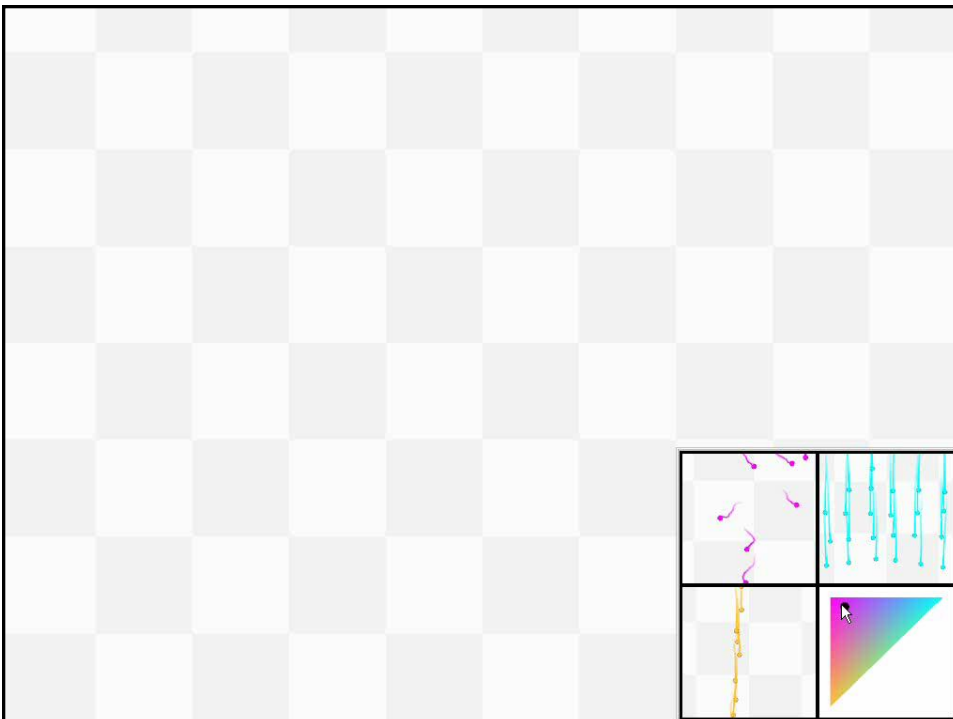
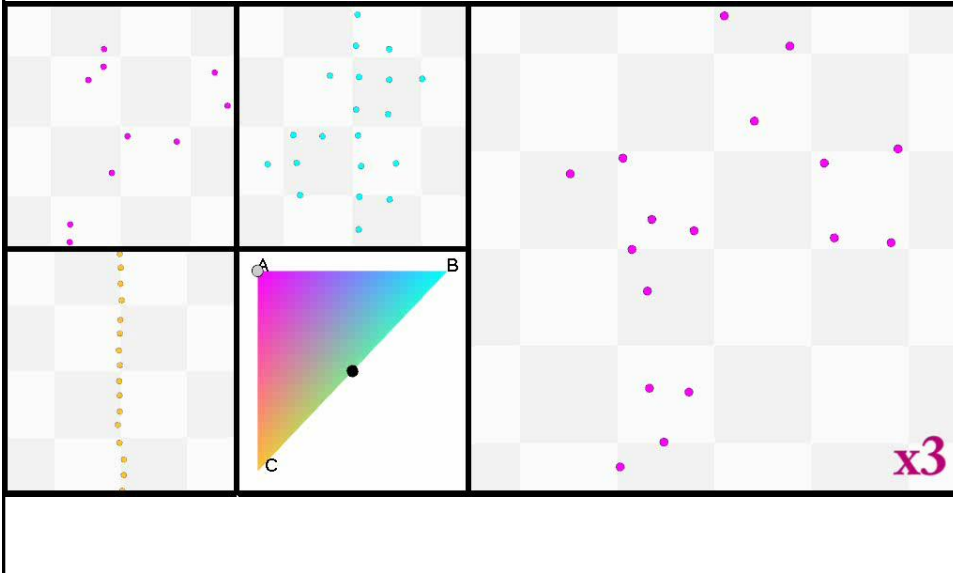
Models should have blendable features

Sampling-based modeling of

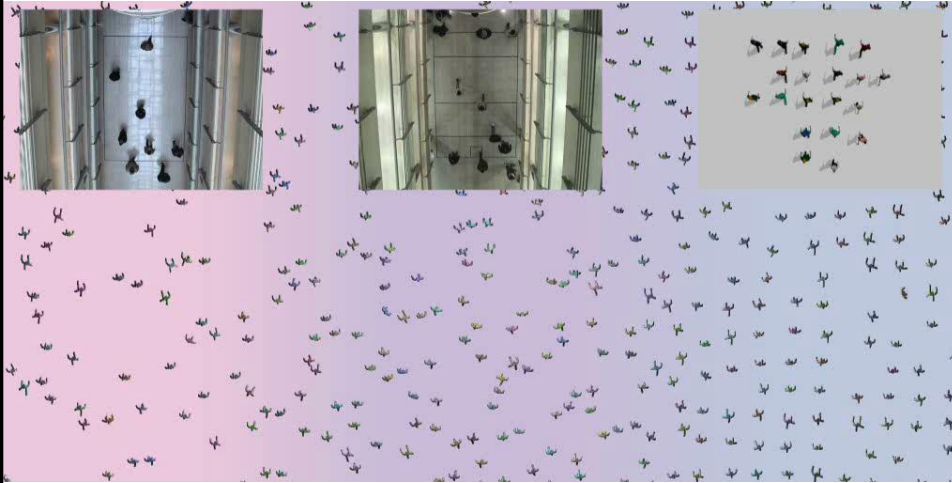
high-dimensional neighborhood formation
individual trajectory



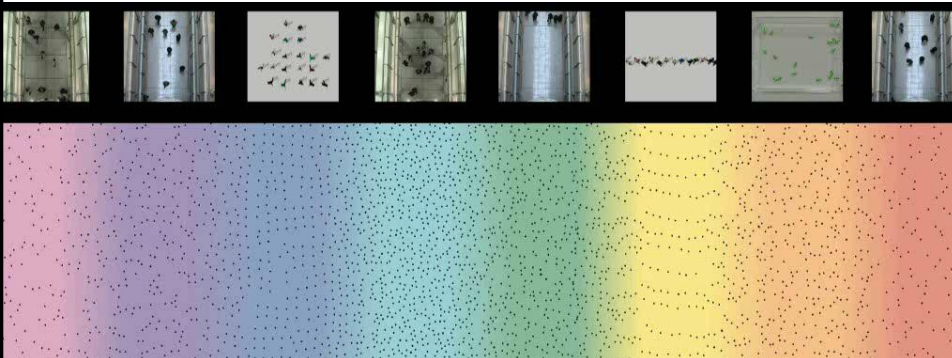
Three-way Interpolation



Spatial Transition



Spatial Transition



Wrap Up

Data-Driven Crowd/Group Behavior

Immediacy of control

Direct manipulation over fine details

Group motion as a primary entity

Texturing, style transfer, scissor/stitch

Interactive editing, copy-paste, group/ungroup

Blend, interpolate

Combine Principle and Observation

Learning principle from observation

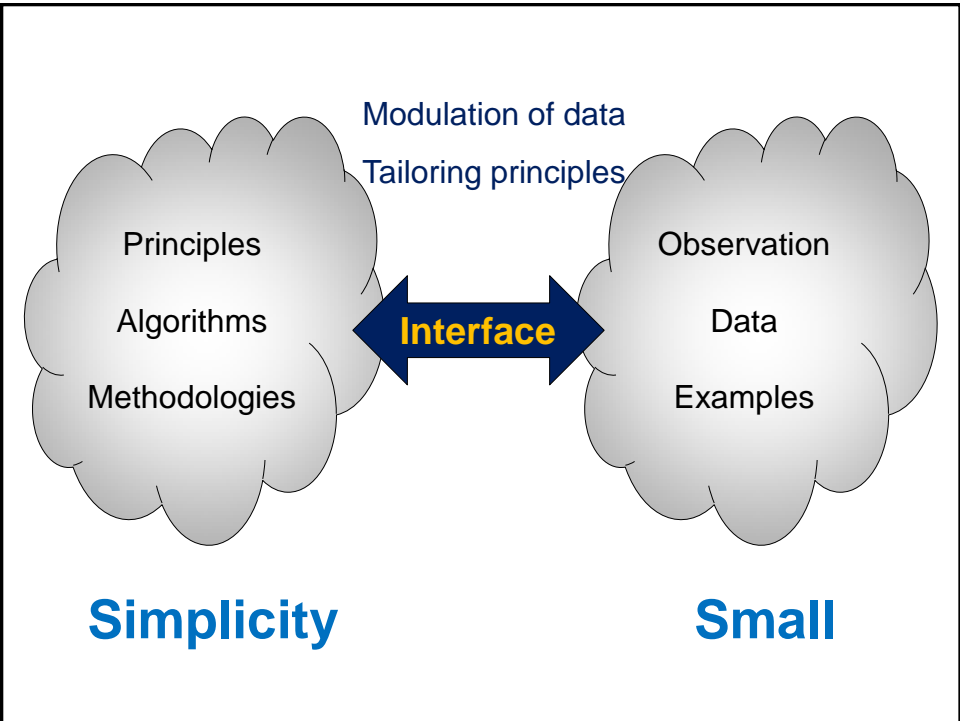
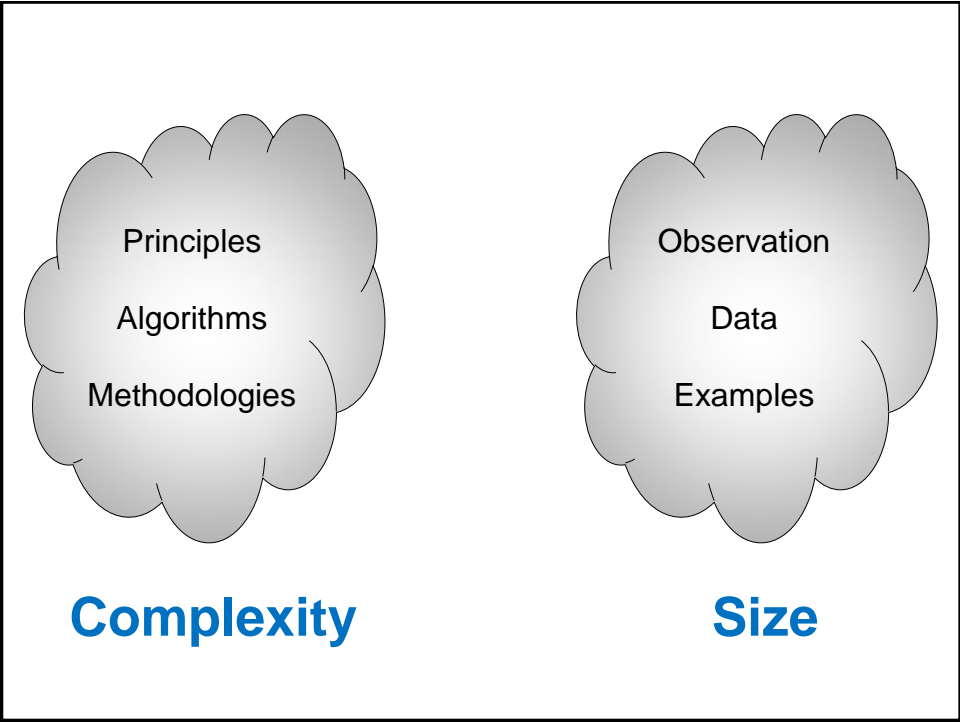
Capture symmetry, regularity, and patterns in data

Observation drives principles

Data-driven physics simulation

Principle guides data manipulation

Motion editing using physical properties



The papers and videos are available at **SNU Movement
Research Lab**

<http://mrl.snu.ac.kr>



Collaborators

Eunjung Ju, Myung Geol Choi, Kang Hoon Lee
Taesoo Kwon, Minji Park, Shigeo Takahashi